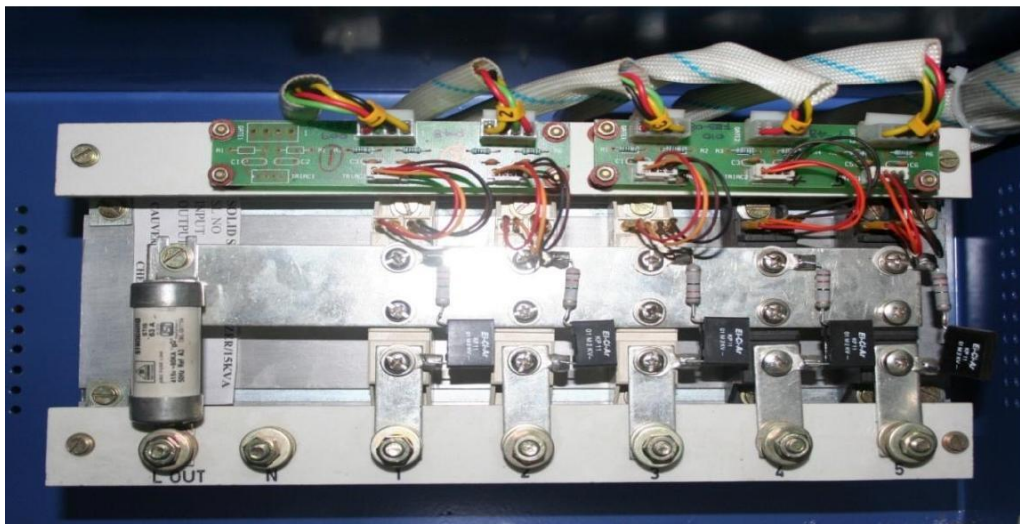
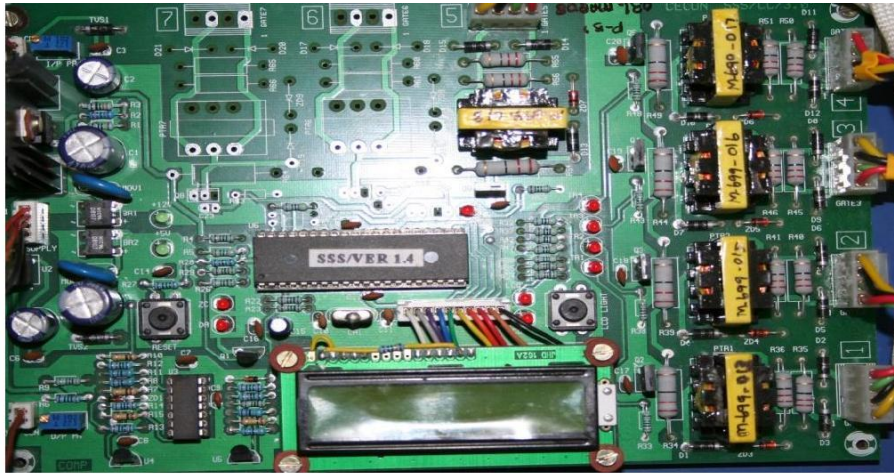


# Line Conditioning Unit (LCU)



Line conditioning unit with Isolation Transformer of rating 7.5KVA to 45 KVA The Isolation Transformer will have screen between primary and secondary. Galvanic isolation of 6KV between input and output is provided to ensure low leakage current. The insulation is of Class 'F' as per IEC. The cooling will be of natural cooling.

The best phase selector output (2phases) will be the input to **SVR**. The voltage regulation is achieved by means of switching the appropriate secondary side taps of the Isolation Transformer through thrusters.